

CSI GROUP



Automotive
LOGISTICS
MEXICO



Annual Operations:

1,500,000 Vehicles

15,000,000 Services Nationwide

Generates 1,700 Direct Jobs and over 7,000 Indirect Jobs



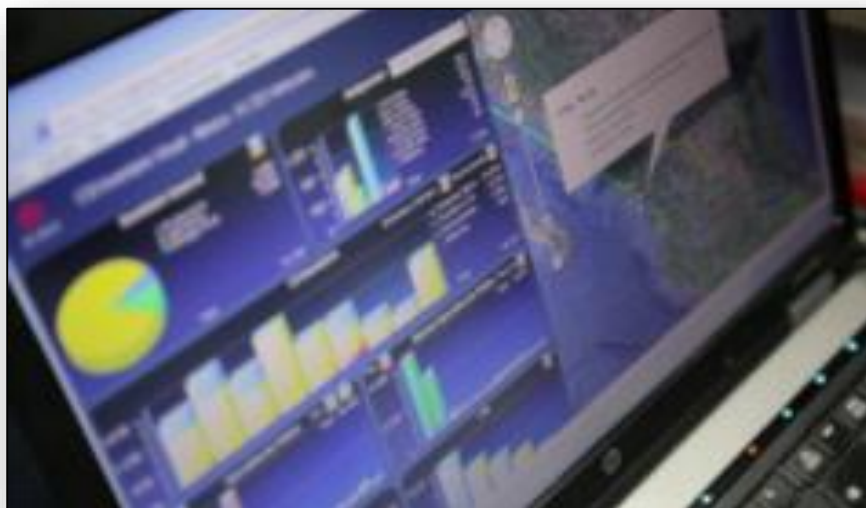
OEM YARD PROCESSOR

NATION-WIDE TRANSPORT

LOGISTICS PROVIDER

VDC'S

PORT PROCESSOR

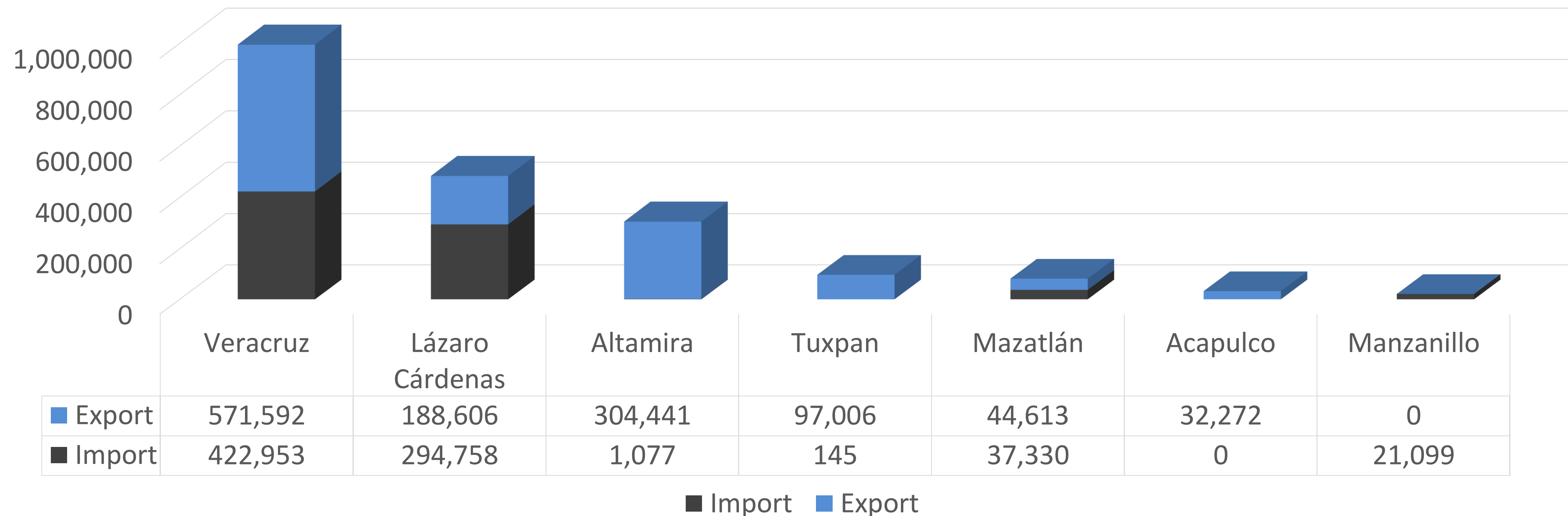


An aerial photograph of a port area. In the foreground, there is a large, paved lot filled with hundreds of cars, organized in neat rows. Behind the car lot, there are stacks of shipping containers and a large cargo ship docked at a pier. The sky is overcast. The text 'PORTS AUTOMOTIVE INDUSTRY OVERVIEW' is overlaid in white, bold, sans-serif font. Two horizontal blue lines flank the text. A grid of blue dots is visible in the bottom left corner.

PORTS AUTOMOTIVE INDUSTRY OVERVIEW

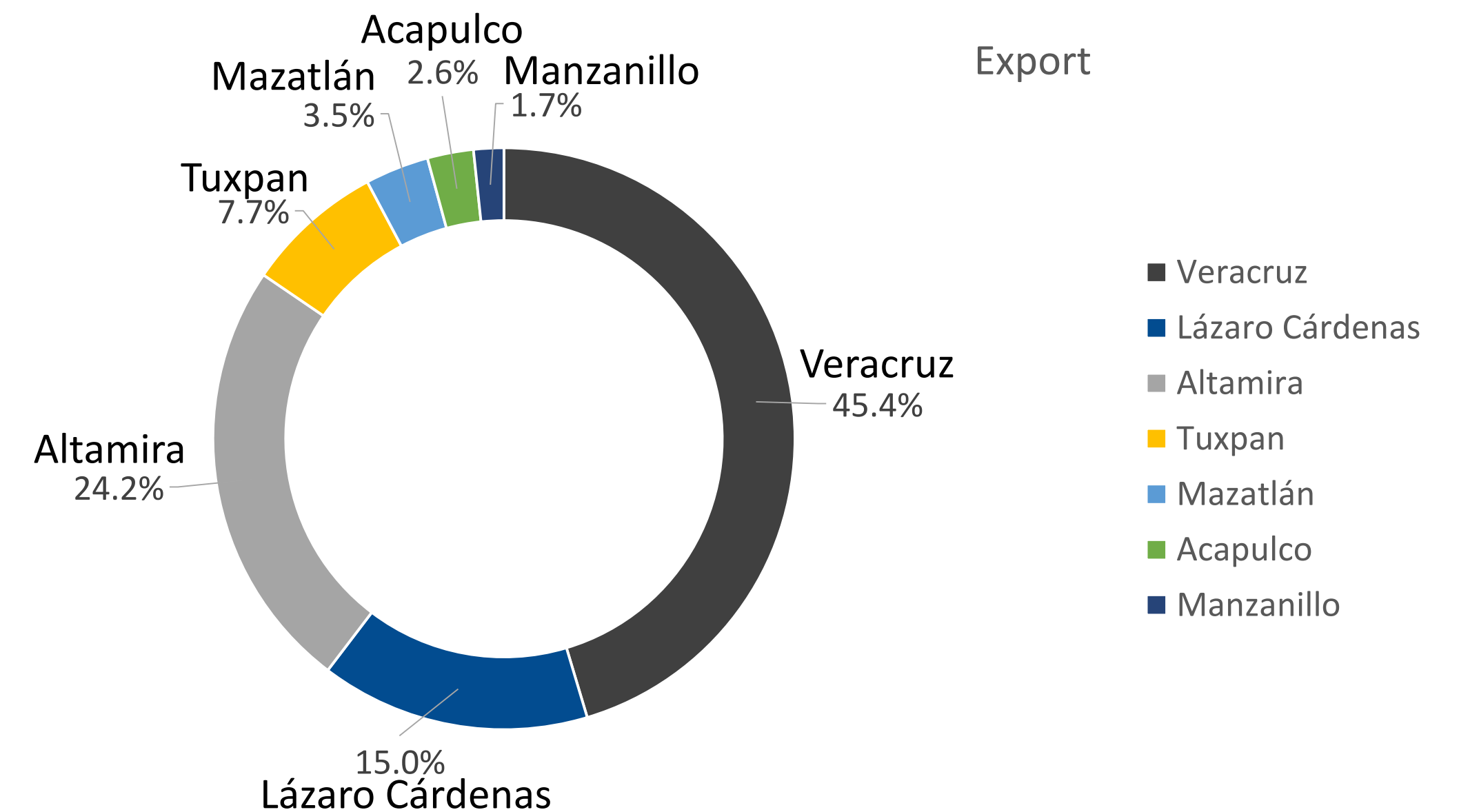
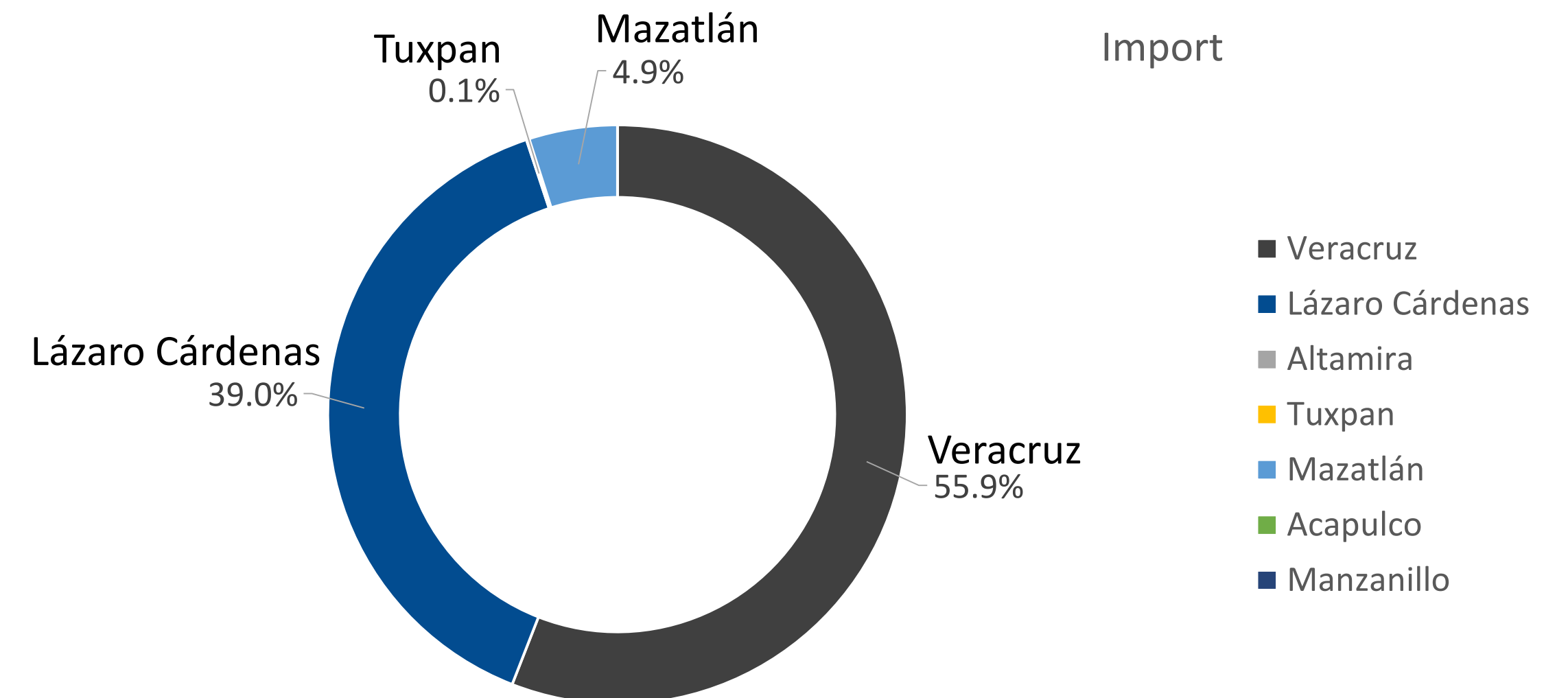
VOLUME OPERATED IN THE PORTS OF MEXICO 2019

Port	Volume 2019	%
Veracruz	994,545	49.3%
Lázaro Cárdenas	483,364	24.0%
Altamira	305,518	15.2%
Tuxpan	97,151	4.8%
Mazatlán	81,943	4.1%
Acapulco	32,272	1.6%
Manzanillo	21,099	1.0%
Total	2,015,892	



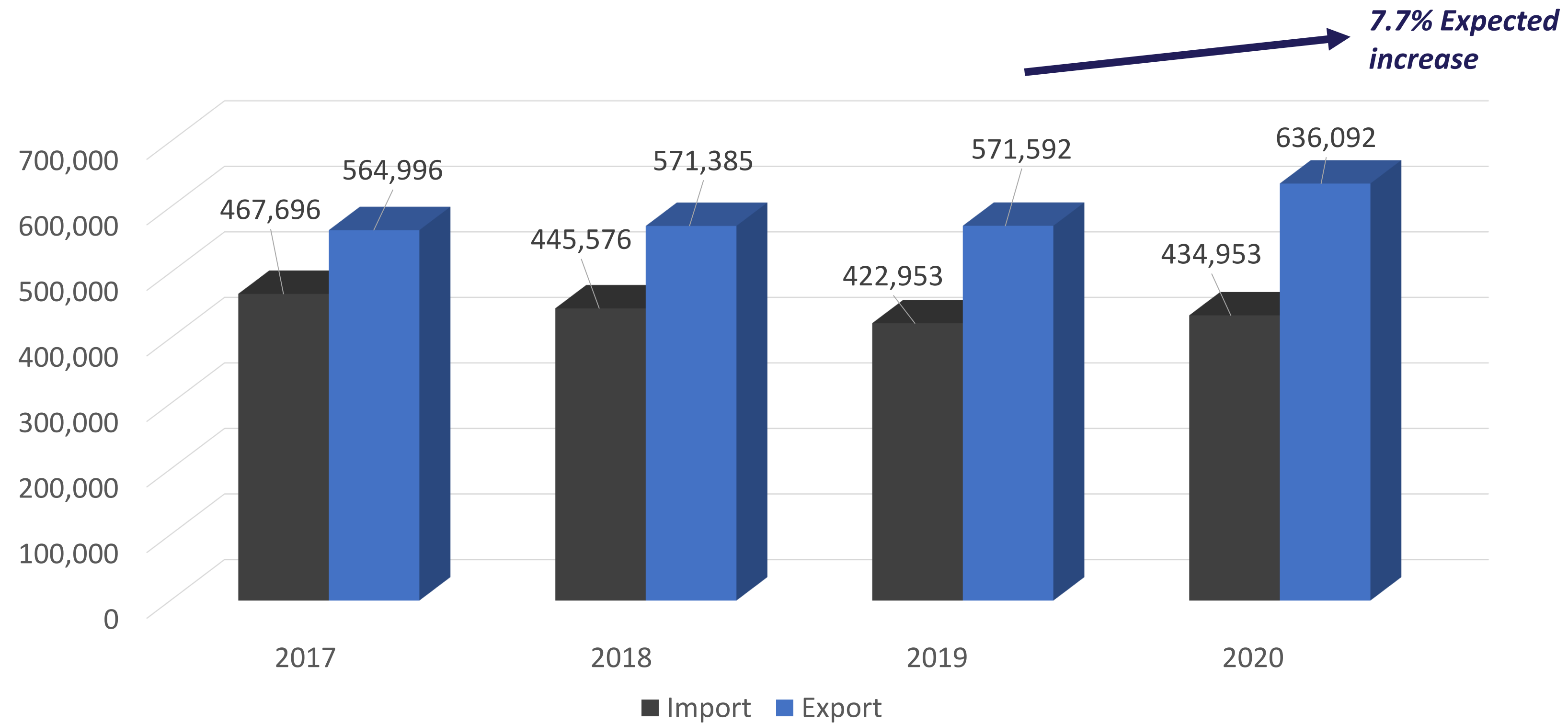
VOLUME OPERATED IN THE PORTS OF MEXICO 2019

Port	Import	Export
Veracruz	422,953	571,592
Lázaro Cárdenas	294,758	188,606
Altamira	1,077	304,441
Tuxpan	145	97,006
Mazatlán	37,330	44,613
Acapulco	0	32,272
Manzanillo	0	21,099
Total	756,263	1,259,629
%	37.5%	62.5%



VOLUME OPERATED IN THE PORT OF VERACRUZ

Market	2017	2018	2019	2020*
Import	467,696	445,576	422,953	434,953
Export	564,996	571,385	571,592	636,092
Total	1,032,692	1,016,961	994,545	1,071,045



USE OF EXTERNAL YARDS

During the last 2 years, the automotive industry has faced challenges due to the slow rotations of the inventories, resulting in the use of more or the expansion of the current external yards

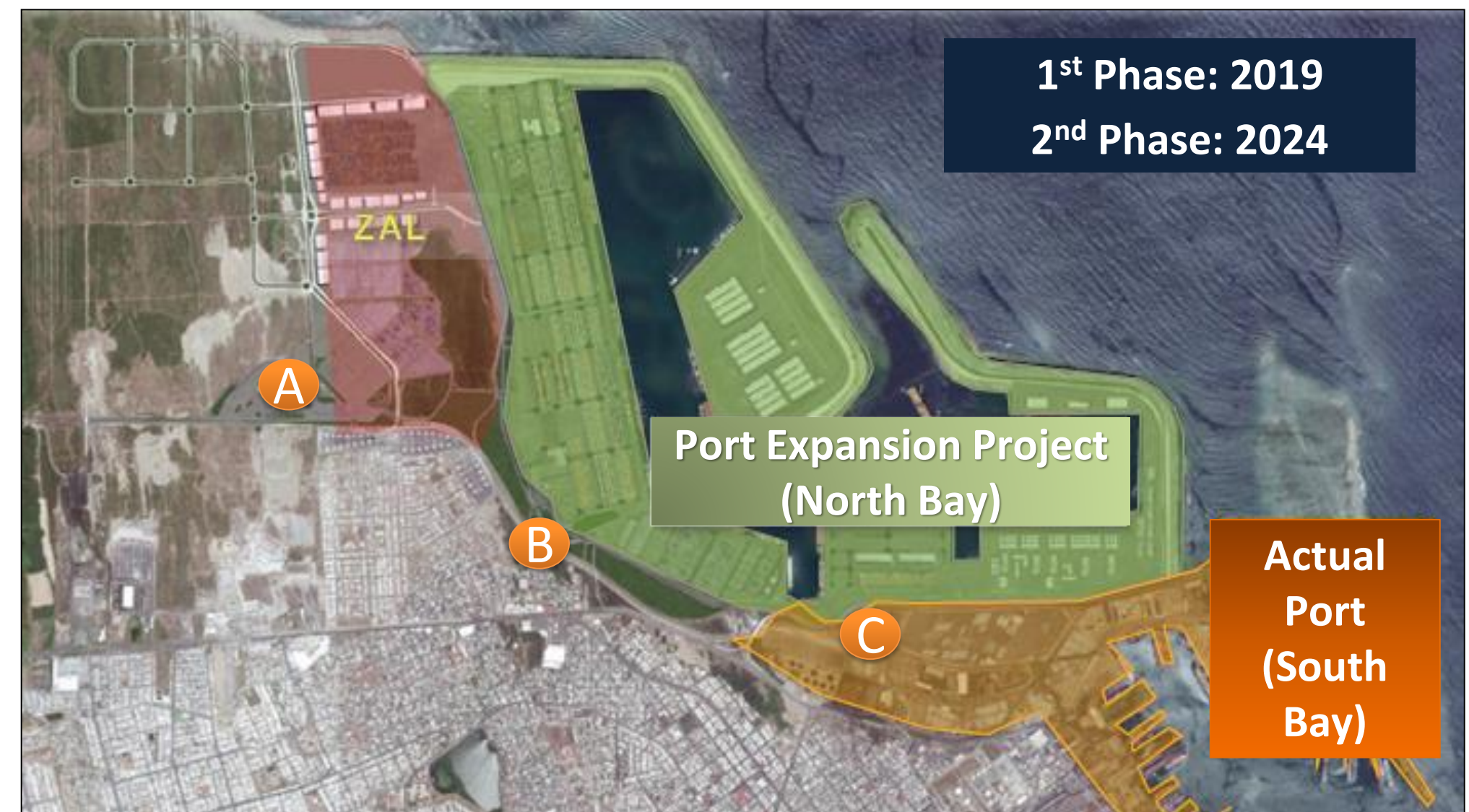


INFRASTRUCTURE OF THE PORT OF VERACRUZ

The Port Expansion will bring multiple benefits to the current operations of the Port of Veracruz.

For the Finished Vehicles Operations:

- 2 more possible berthing positions (South Bay)
- More availability of piers
- Increase on the railway static capacity
- Biggest customs of the country
- among others



PORT OF VERACRUZ COMPETITIVE ADVANTAGES

Port of Veracruz competitive advantages
First Port of México
The main port of México in handling vehicles, operating around 50% of Mexico´s total volume
Eight (8) possible berthing positions for vehicle processing
Not only has railway access, but 2 railway companies operate within the Port of Veracruz
There are two (2) highways to enter the Port of Veracruz
Model Customs operating 24/7 - 365 days a year
Quality Trade Mark tool implementation to improve safety, operating time, quality standards, and operation costs
Development of specialized infrastructure for handling vehicles
CALT that controls entrance/exit of trucks
Certified under ISO-28000 (Safety)



PARK GARAGE

PORT OF VERACRUZ



PARK GARAGE CSI

PORT OF VERACRUZ



- *The Park Garage started operations at the end of January 2020.*
- *The Park Garage increased the current Port Static Capacity more than 30%*

The Park Garage was planned to enhance the Port of Veracruz capacities.

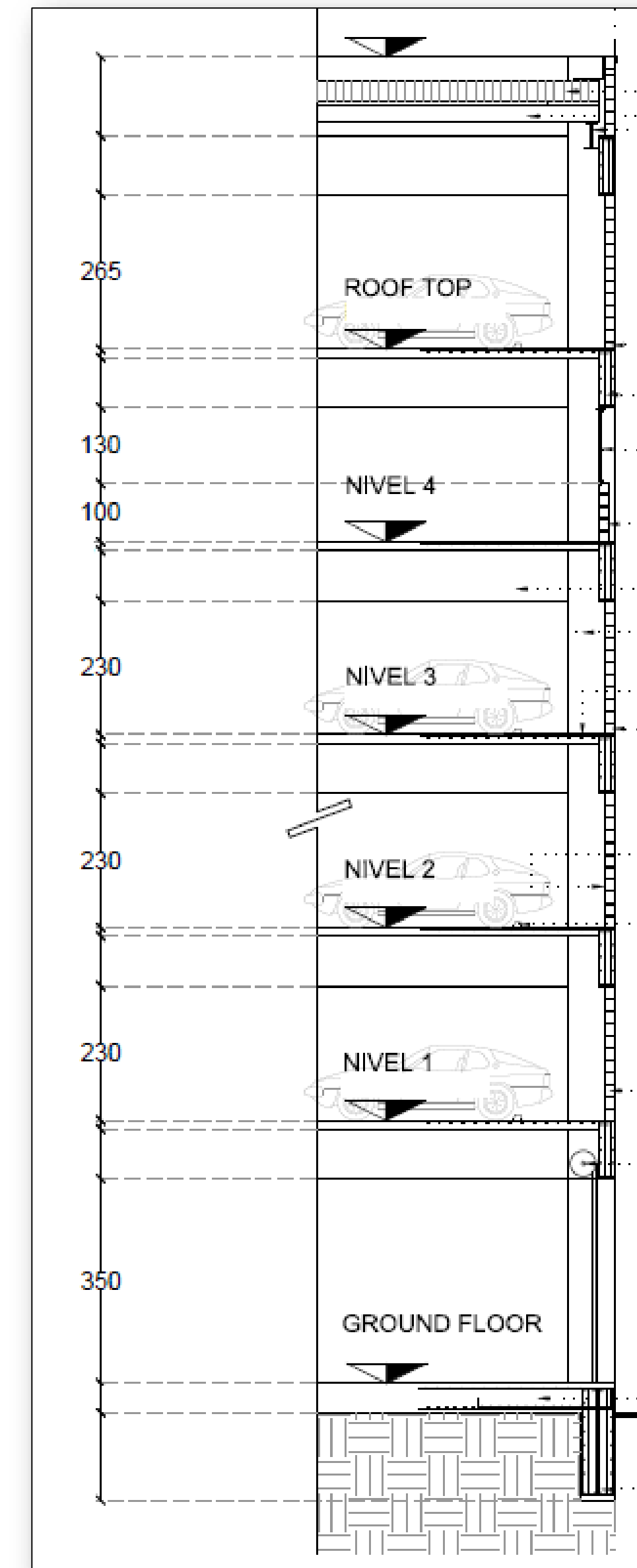
Highlights

- Unique building of its kind in the American Continent
- Started operations on January 20th 2020
- 637 days of construction
- 64,000 cubic meters of concrete
- 8,000 tons of steel
- Built on a 27,000 square meters area
- 16.5 Ha on the 6 levels



Level details

Level	Height
Ground floor	3.50 m / 11.48 ft
Level 1	2.30 m / 7.54 ft
Level 2	2.30 m / 7.54 ft
Level 3	2.30 m / 7.54 ft
Level 4	2.30 m / 7.54 ft
Roof top	2.65 m / 8.69 ft

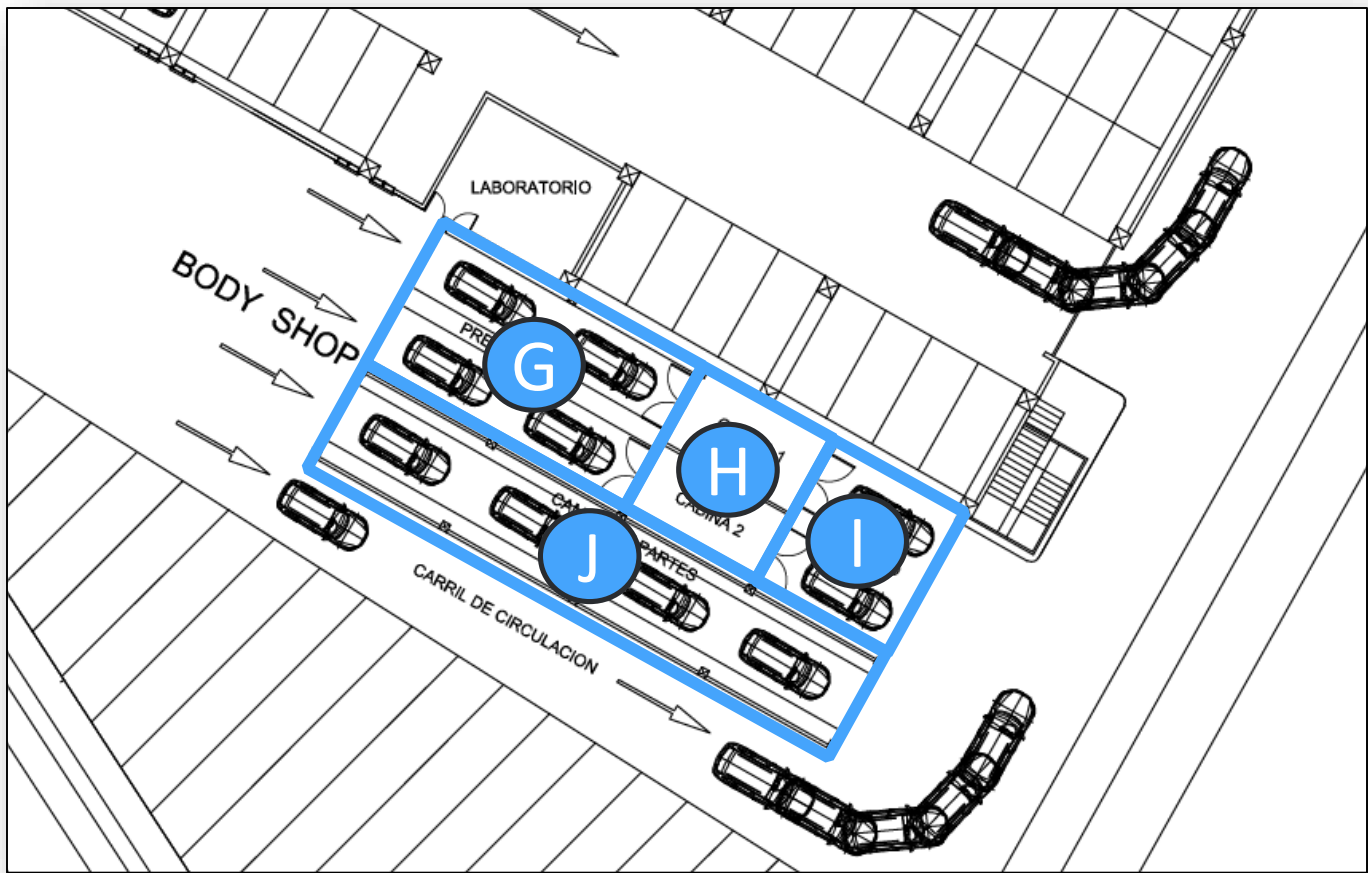
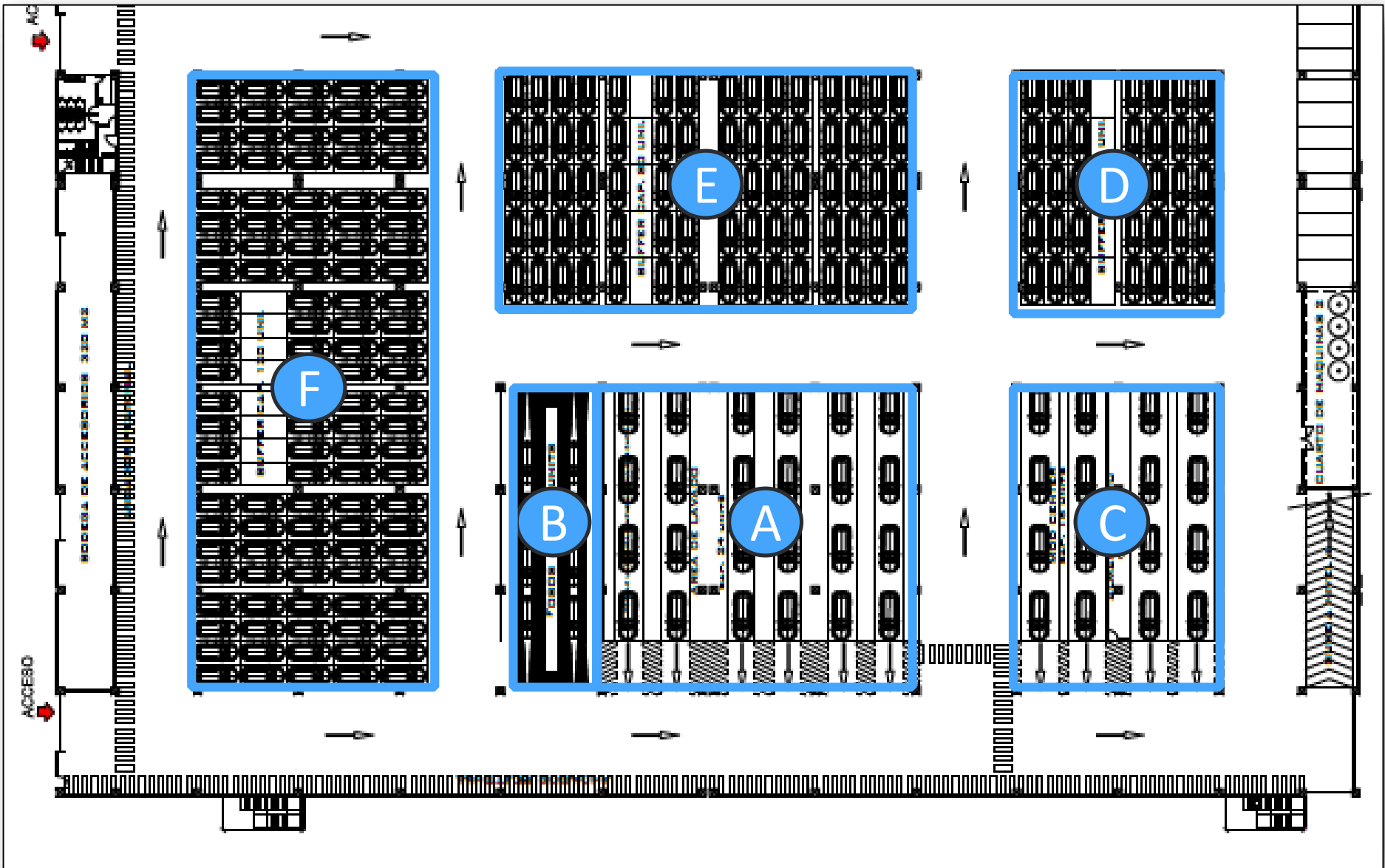


Installed capacity

Services			
@	Area	Tunnels	Static capacity
A	Washing	6	24 vehicles
B	Underbody ramps	2	8 vehicles
C	Personalization	4	16 vehicles

Buffers		
@	Buffer	Static capacity
D	1	40 vehicles
E	2	80 vehicles
F	3	120 vehicles

Body shop		
@	Area	Static capacity
G	Preparation	4 vehicles
H	Paint booths	2 vehicles
I	Rest	2 vehicles
J	Part replace	4 vehicles



CERTAINTY

Space availability:

- Guaranteed shipping spaces within an enclosed facility

Services:

- Underbody product application
- Humidity control
- Washing
- among others

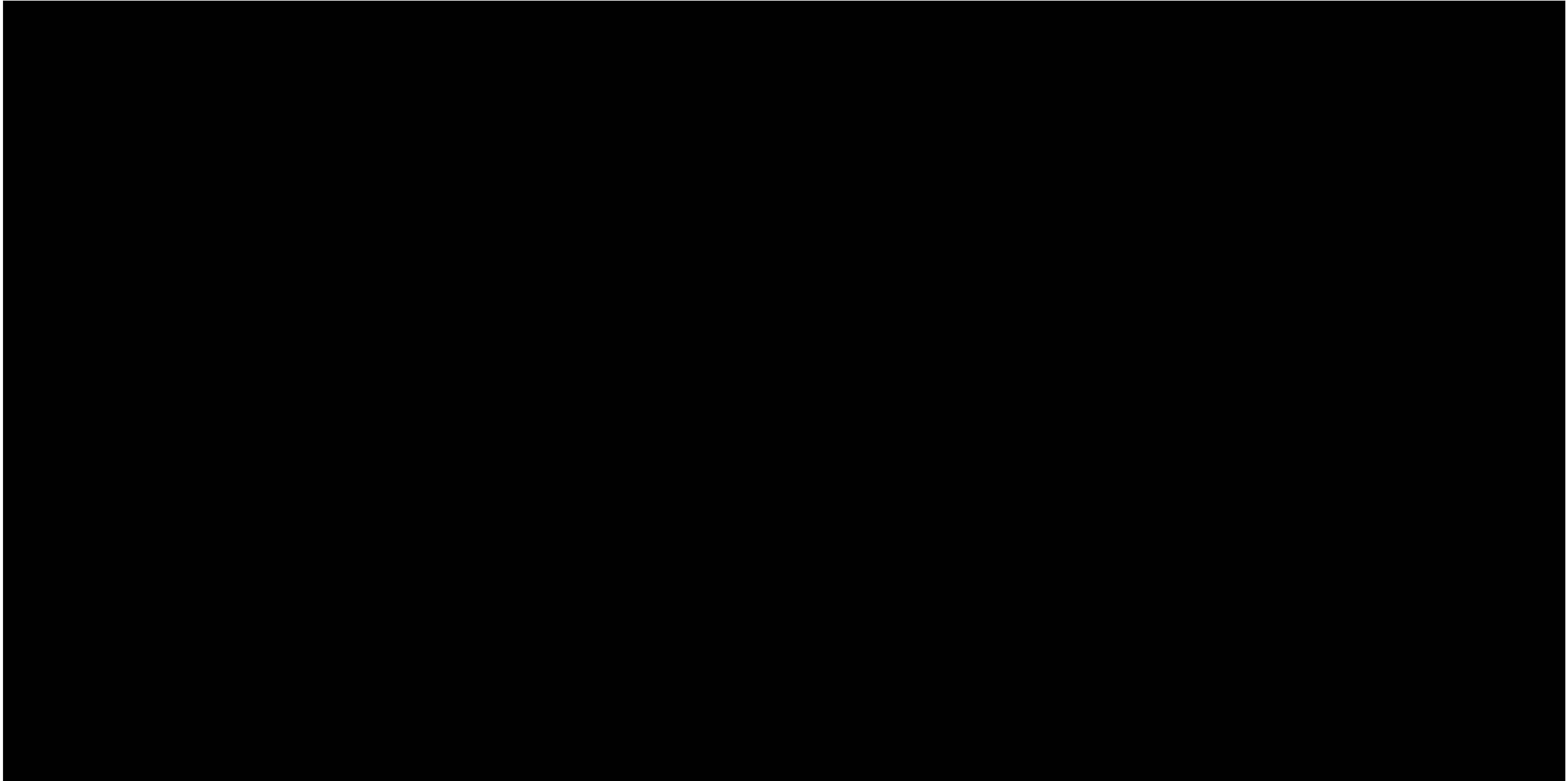
PROTECTION AGAINST ENVIRONMENTAL FACTORS

Cost reduction in:

- Inspections before and after Norte
- Washing after Norte
- Re application of wrap guard

Risk reduction in:

- Scratches / Damages
- Contamination
- UV ray affectation
- Dust
- Animal waste



Along with the **Port Expansion**, this infrastructure investment not only reaffirms Veracruz as the Leading Port in Mexico, but also positions it as a worldwide reference in the Automotive Logistics Chain.

¡GRACIAS!

CSI GROUP



Automotive
LOGISTICS
MEXICO



PRIVACY POLICY

The information contained in this document provides a general overview of CSI Group. It is not intended to be a complete review of all matters concerning the Group. The Group has taken all reasonable care in producing and publishing information contained on this document, and will endeavor to do so regularly. Material on this document may still contain technical or other inaccuracies, omissions, or typographical errors, for which the Group assumes no responsibility. The Group makes no representations nor provides any warranty as to the accuracy, currency, or completeness of such information. The contents of this document may be revised by the Group at any time without prior notice. The information posted on this document may be superseded by subsequent disclosures. In no event shall the Group be liable for any direct, indirect, consequential or other damages arising or connected with the use of this document or the information herein. When accessing this document, you commit to not reproduce or use any industrial and intellectual property right belonging to The Group without their specific authorization.

COPYRIGHT

© 2017 CSI Group or its affiliate companies. All rights reserved. No part of this publication may be reproduced or transmitted in any form or for any purpose without the express permission of CSI Group or its affiliate companies.

CSI Group and other CSI products and services mentioned herein as well as their respective logos are trademarks or registered trademarks of CSI Group (or its affiliate companies) in Mexico and other countries. All other product and service names mentioned are the trademarks of their respective companies.

Please see <http://http://www.csigroup.com.mx/Sunus/PrivacyPolicy.aspx> for additional trademark information and notices.